

# DMF Client Interface for Windows

Joseph C. Nemeth  
Technical Lead

# What is this?

- The DMF Support for Windows feature allows the Windows users to control DMF via file shares configured on Samba server.
  - Windows Explorer views of shared Linux File Systems
  - Enhanced DMF control options from Windows
  - CLI commands for DMF

# DMF File Properties

**File6.txt Properties**

General | Hash / CRC | Security | Details | Previous Versions | DMF

File Path: \\169.238.65.16\test\_dmf\Alex\File6.txt

DMF File State: Partial - file has a mix of dual-state, offline, unmigratir

Space

Online space:	74 214 bytes	66,81 %
Offline space:	36 864 bytes	33,19 %
Total space:	111 078 bytes	100,00 %

Migrate

Migrate online file to offline media.

Release disk space

Migrate

Recall

Recall previously migrated file.

Update file access time

Recall

For all DMF attributes or advanced settings, click Advanced.

Advanced...

OK Cancel Apply

**Advanced DMF file properties**

Attributes:

Attribute	Value
File Path	\\169.238.65.16\test_dmf\Alex\File6.txt
DMF File State	Partial - file has a mix of dual-state, offline, un
BFID	543bcae7000000000000000017
File Size	111 078 bytes
Online space	74 214 bytes
Offline space	36 864 bytes
Total space	111 078 bytes
Site Tag	555

Regions:

#	State	Offset	Size (in bytes)
1	Offline	0	36 864
2	Dual state	36 864	74 214

Release disk space

Migrate

Update file access time

Recall

Properties

Site Tag: 555

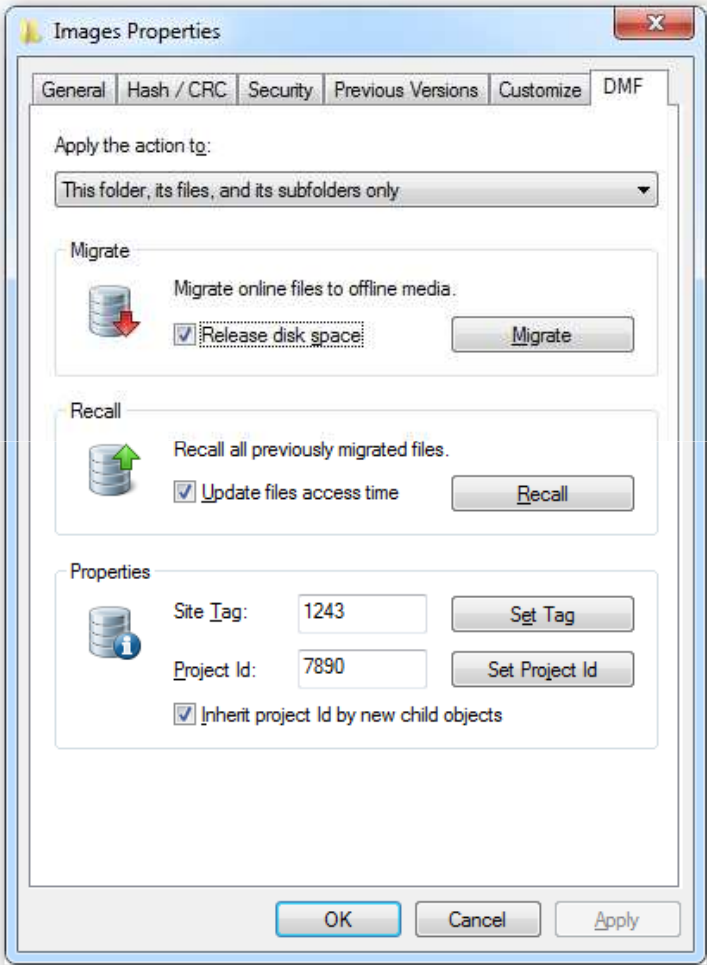
Set Tag

Project Id: 444

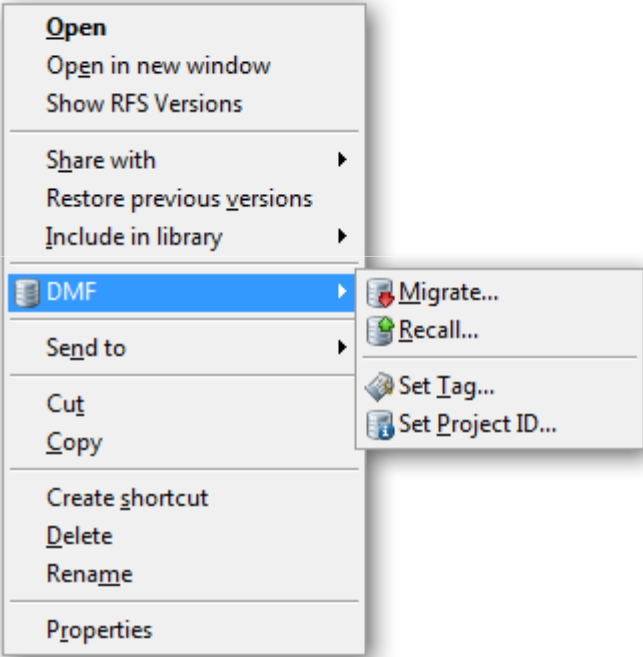
Set Project Id

Close

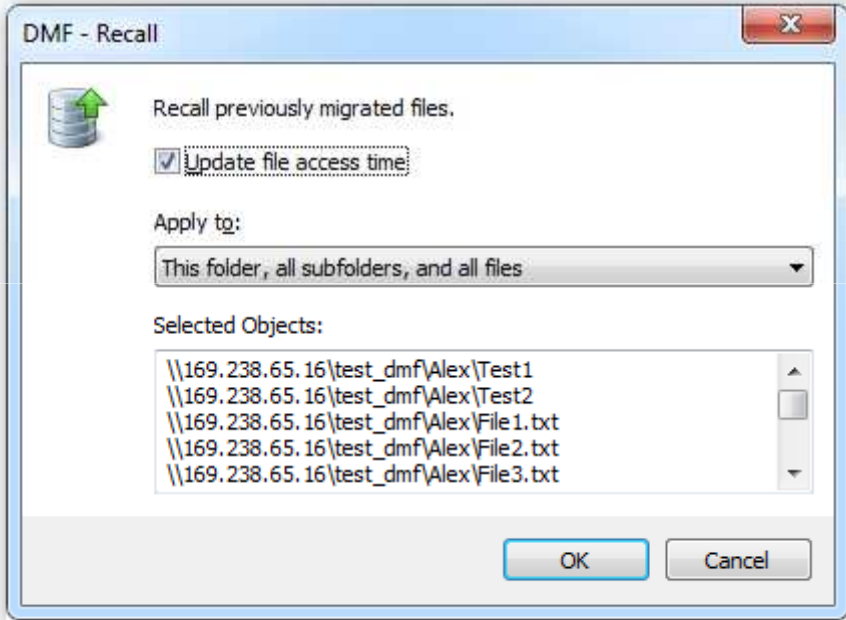
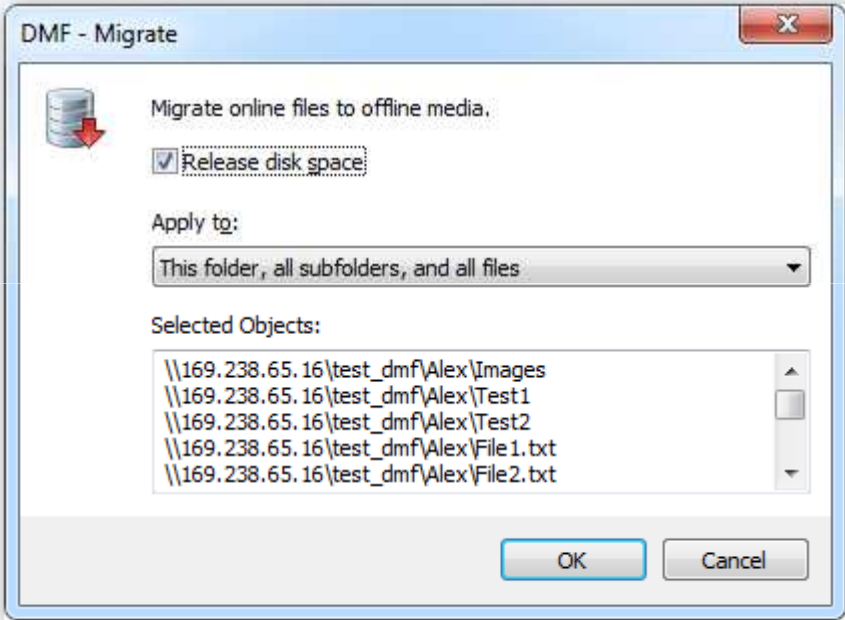
# DMF Folder Properties



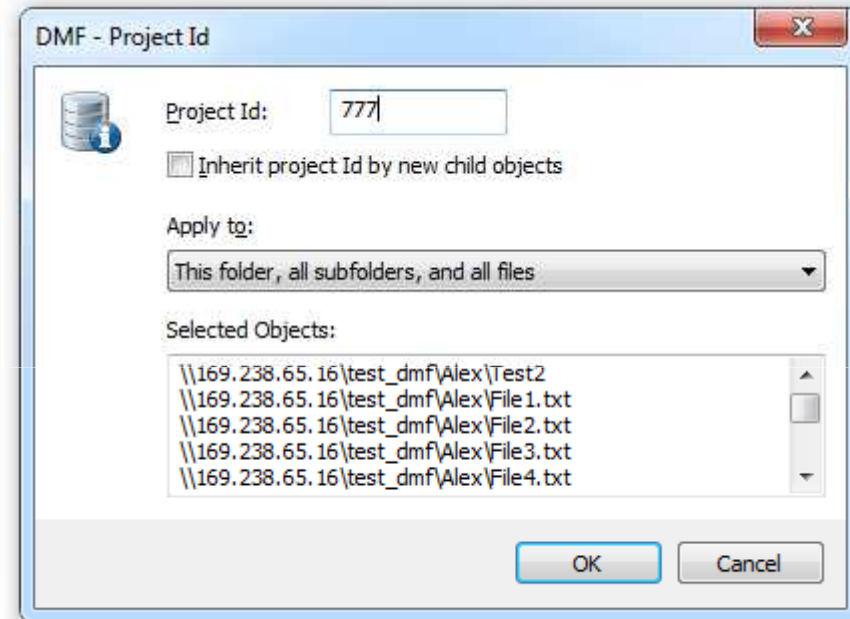
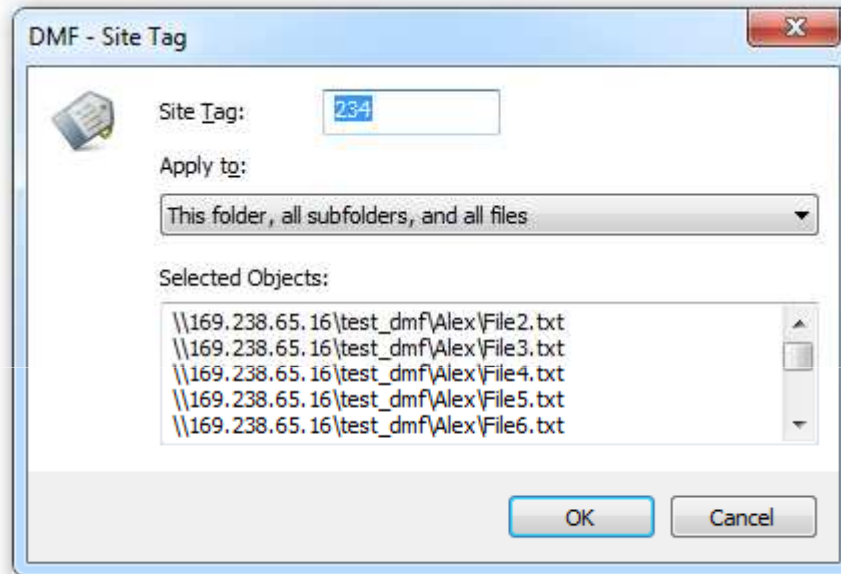
# DMF Explorer Menu Extension



# Migrate/Recall Dialogs

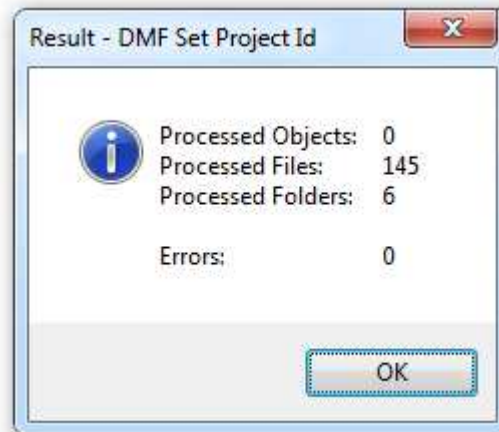
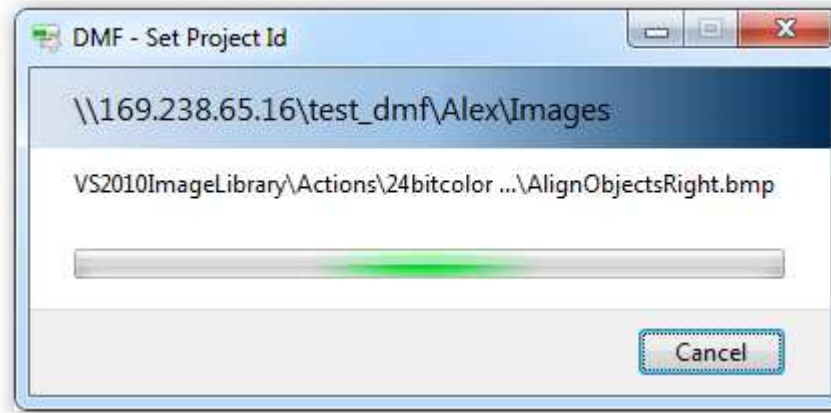


# Tag Dialogs





# Progress and Status Dialogs





# Command-Line Tools

DMF Utility	Description
<b>DmGet</b>	Similar to dmget utility on Linux.
<b>DmPut</b>	Similar to dmput utility on Linux.
<b>DmAttr</b>	Similar to dmattr utility on Linux.
<b>DmProjId</b>	Similar to dmprojid utility on Linux. (not yet released)
<b>DmSysInfo</b>	Shows the list of available and supported DMF operation for the specified path. (Windows only)

- All commands require the new parameter “-z <DmfRootPath>”

# Deployment

- Requires SAMBA 3.6.3 (incl with ISSP 3.4)
- Requires manual config prior to ISSP 3.4
- Not available with Windows CXFS clients