

*Welcome!*



# Tasmanian Partnership for Advanced Computing

Australian Antarctic Division (AAD)

Tasmanian State Government

University of Tasmania

...and anyone doing research in Tasmania.

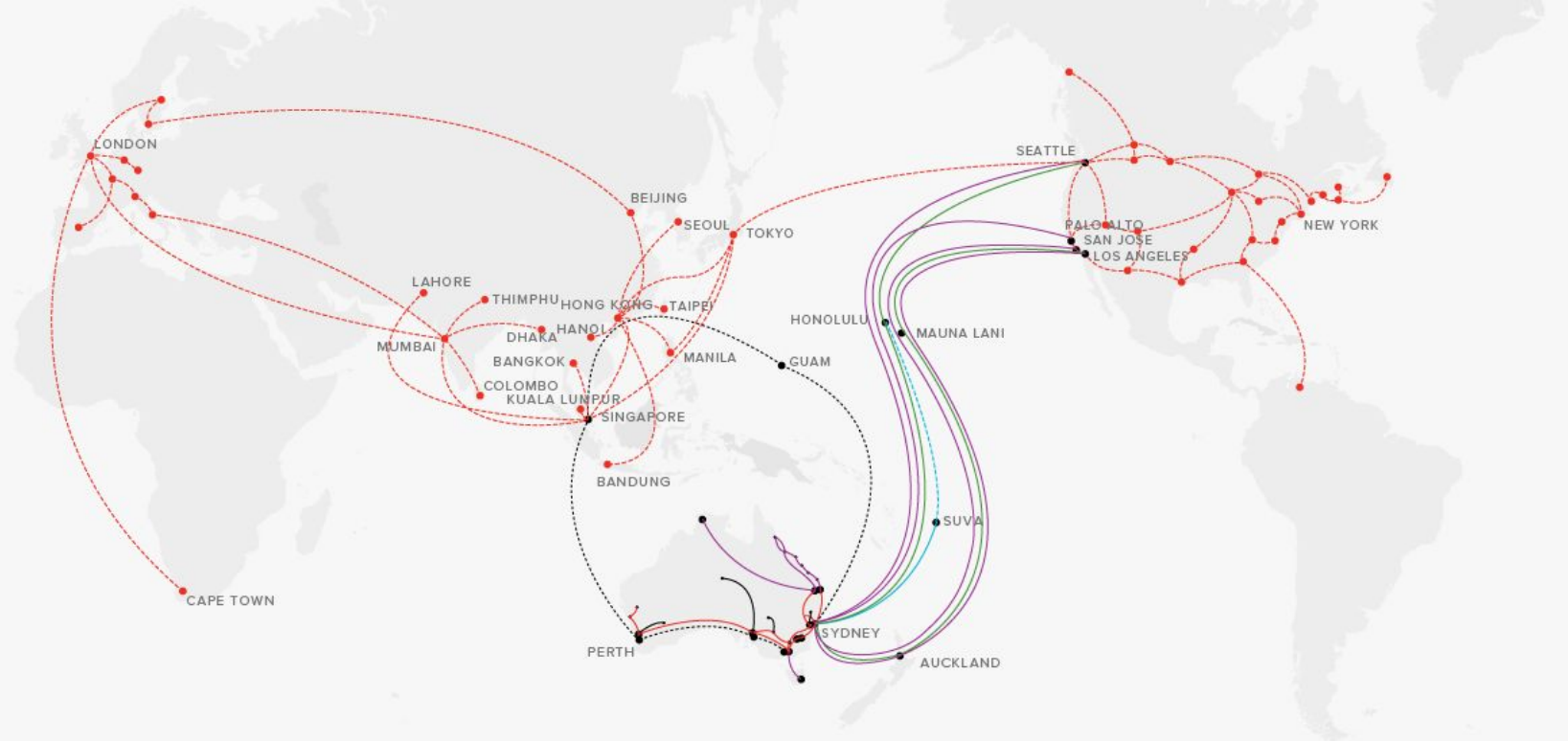


# TPAC Infrastructure Services

Compute (cloud + HPC)

Storage

Networks (40GbE + Infiniband + AARnet.edu.au)



Our high-speed advanced research and education network

[EXPLORE NETWORK SOLUTIONS](#) →

● AARNET POP	- - - R&E NETWORK	— 1 GBPS	— 100 GBPS
● OTHER R&E POP	— 622 MBPS	- - - 2.5 GBPS	— N* 100G WDM TRANSMISSION
	- - - 622 MBPS BACK UP PATH	— 10 GBPS	

## **HPC clusters**

SGI 8200 512-cores + DDR (katabatic)

SGI 8200 512-cores + DDR (vortex)

SGI UV1000 512-cores + NUMALink (eddy)

Beowulf cluster 676-cores + GbE (via desktops)

Huawei 7,120 cores + EDR (kunanyi - still being commissioned)

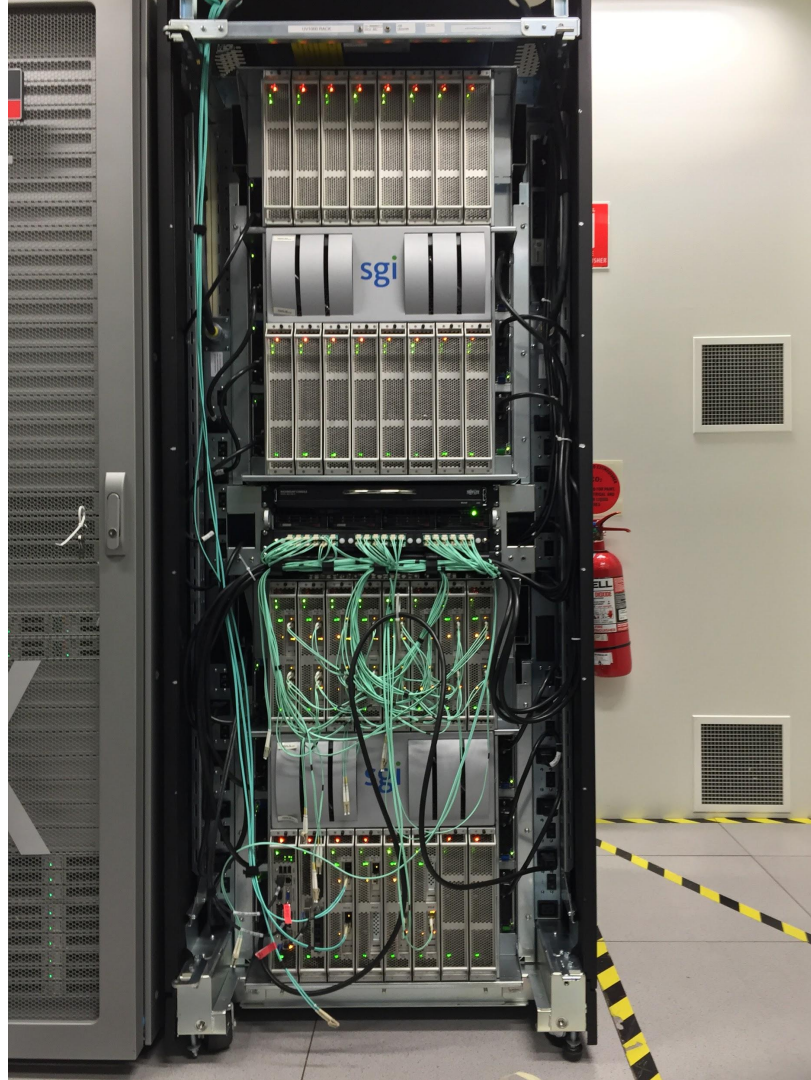
Chassis of 4 x Xeon Phi 7210 nodes (KNL 64-core 1.3GHz)

## **Research cloud (Nectar)**

3,200 CPU cores (Openstack) with 1PB Ceph RBD cluster











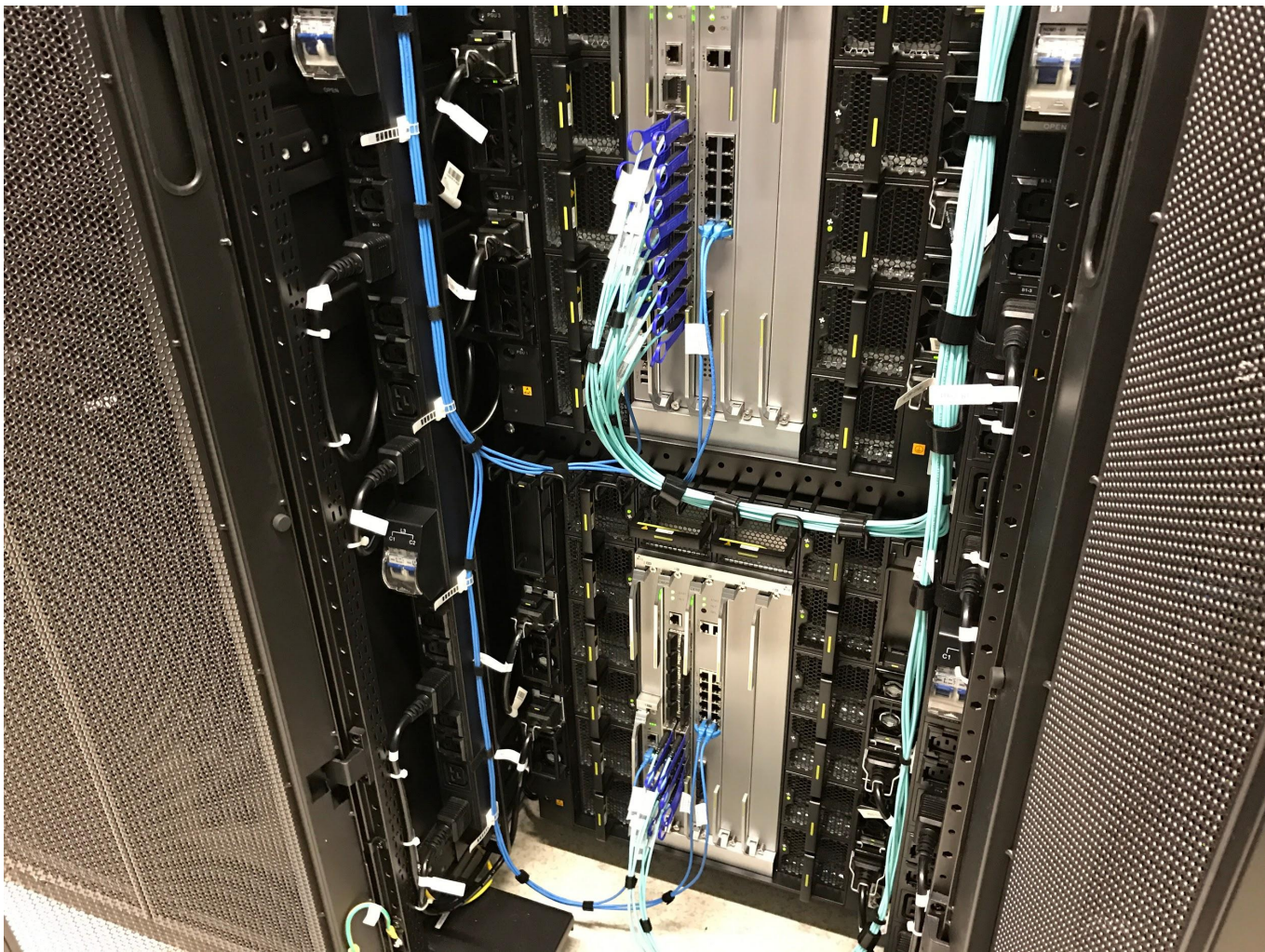












## SGI DMF 6.X environment

- SpectraLogic T950 + expansion frame (mix LTO-4 and LTO-6 drives)
- 2PB capacity
- Aging SGI IS220 as XFS + DMAPI + DMF DCM
- Originally installed in 2009
- Planned upgrade in 2018



# WiFi access during DMF User Group meeting

Send an email to [nw@utas.edu.au](mailto:nw@utas.edu.au) with your:

- Email address
- Full name
- Organisation
- Mobile phone